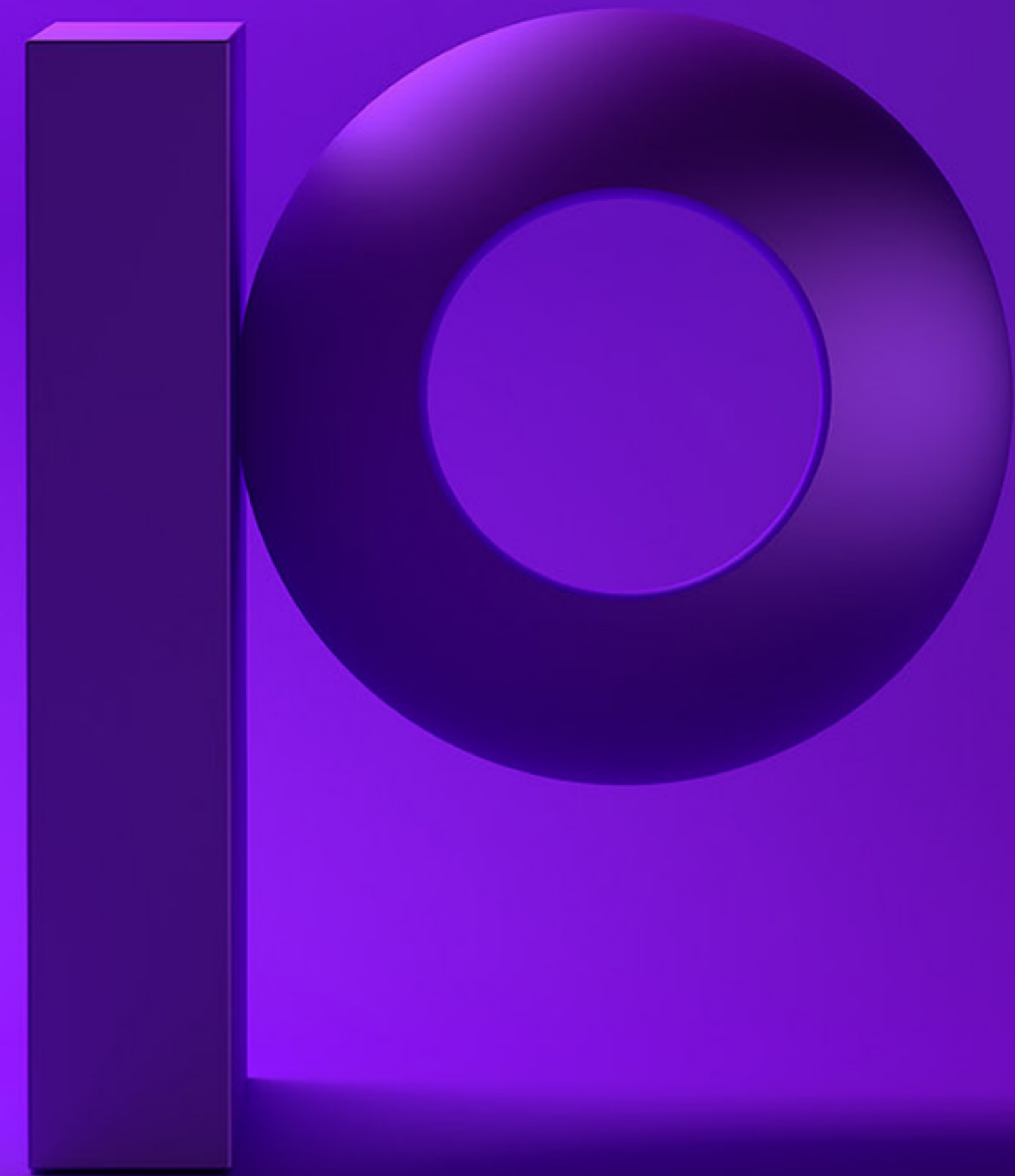


precisely

Data Unleashed: 5 Benefits of Harnessing APIs for Your Applications



Introduction

Data powers every competitive advantage, but raw data alone is rarely enough. Organizations need context: the additional attributes, signals, and relationships that transform a record into a decision. Data enrichment, the process of enhancing first-party data with external information, has become a foundational practice for analytics, AI model development, customer intelligence, and operational efficiency.

At the center of modern enrichment strategies are Application Programming Interfaces (APIs). Unlike traditional batch file transfers or manual data management, APIs provide a flexible, scalable, and real-time pathway to the data context organizations need — without the overhead of building and maintaining complex data pipelines from scratch.

This eBook examines five key benefits of using APIs for data enrichment, and how organizations across industries are using them to move faster, decide smarter, and build more capable AI-powered applications.



5 Benefits of Harnessing APIs for Your Applications

1 Enhanced Data Quality and Accuracy

The quality of enriched data is only as good as the source it comes from. APIs that connect to curated, validated, and continuously updated data sources give organizations confidence that the context they are adding to their records is accurate and current.

Modern data enrichment APIs go beyond simple lookups. Many expose pre-linked datasets where attributes across multiple data types — property, demographics, risk, business intelligence — are already joined through a shared identifier. This eliminates the matching errors and data drift that occur when organizations attempt to stitch datasets together manually. The result: enriched data that is not just populated, but trustworthy.

2 Time and Cost Efficiency

Data professionals spend roughly 80 percent of their time finding, preparing, and managing data — leaving only 20 percent for the analysis and modeling they were hired to do. APIs fundamentally change this ratio by automating data retrieval and eliminating manual sourcing, formatting, and verification workflows.

For AI and machine learning teams, this efficiency is especially valuable. APIs that return analysis-ready enriched data accelerate feature engineering, reduce model development costs, and shorten the path from data acquisition to production deployment.

3 Collaboration, Customization, and Scalability

APIs offer a high degree of flexibility, allowing organizations to select exactly the data attributes they need and integrate them directly into existing systems and workflows. Whether enriching a CRM with firmographic data, powering an underwriting model with property risk attributes, or augmenting a customer data platform with demographic segments, APIs adapt to the use case rather than requiring the use case to adapt to them.

As business needs evolve, APIs scale with them. New data types can be added without rearchitecting integrations, and high-volume applications — real-time decisioning, batch enrichment at scale, agentic AI workflows that query data dynamically — can be served by the same API infrastructure. This makes APIs the natural backbone of any enrichment strategy built for growth.



5 Benefits of Harnessing APIs for Your Applications

4 Comprehensive Insights

One of the most powerful capabilities APIs unlock is the ability to merge perspectives across multiple data types in a single workflow. Rather than working from isolated datasets, organizations can combine property attributes, location intelligence, demographic signals, business data, and risk indicators — building a richer, more complete picture of any customer, location, or asset.

This connected data approach is increasingly critical for AI and machine learning models, which improve in accuracy and reliability when trained on feature-rich, contextually grounded datasets. APIs that return pre-linked, multi-attribute data in a single query make it dramatically easier to construct the high-quality training and inference pipelines that AI applications depend on.

APIs also enable near-real-time enrichment, ensuring that decisions — whether made by a human analyst or an automated AI agent — are based on current data rather than a stale snapshot. In industries like financial services, insurance, and retail, where conditions change rapidly, this currency is a direct competitive advantage.

5 Compliance and Data Privacy

As data privacy regulations continue to tighten globally — GDPR, CCPA, and emerging AI governance frameworks chief among them — organizations face increasing scrutiny over the data they use, how it was collected, and whether it can legally be applied to their use cases. APIs from trusted, compliance-first providers reduce this risk by delivering data curated to meet regulatory standards, using aggregated rather than individual-level records, and accompanied by clear data lineage and provenance.

For AI applications in particular, using compliant enrichment data is not just a legal obligation — it is a quality imperative. Models trained on data with unclear provenance introduce regulatory exposure and reputational risk. APIs that surface privacy-safe, validated enrichment data provide a foundation for building AI applications organizations can confidently put into production.

The case for API-based data enrichment is clear. APIs enhance data quality, accelerate time-to-value, reduce integration complexity, enable comprehensive multi-source insights, and provide a privacy-compliant path to the context organizations need to compete in a data-driven world.



Precisely APIs

Working with Precisely can help save you time and money. Your data professionals spend about 80 percent of their time finding, prepping, and managing data — leaving only 20 percent for the analysis, modeling, and strategic work you hired them for. Precisely APIs change that equation by delivering curated, pre-linked, analysis-ready data through AI ready workflows.

precisely

Data Integrity Suite

[The Precisely Data Integrity Suite](#) contains everything you need to deliver accurate, consistent, contextual data to your business — wherever and whenever it's needed. And APIs are essential to keeping that promise. [The Suite Developer Portal](#) offers APIs served by a flexible and scalable architecture so businesses and applications can adapt to changing demands, improve efficiency, support growth, and stay competitive in a rapidly evolving technology landscape — while reducing operational costs and technical debt.



MCP Server

The Precisely MCP server connects trusted APIs and datasets directly into AI applications, LLM-based workflows, and agentic systems—via natural language with no code or complex integration work required. Its model-agnostic design enables non-technical users to ask simple questions in the AI tool of their choice, like Claude, and get the answers they need in seconds. Through the MCP server, AI tools and agents gain the trusted location intelligence they need to ground their reasoning in the real world, reducing hallucinations dramatically and improving the accuracy and quality of their outputs.

Start free and use Precisely APIs, pre-linked datasets, and MCP to test real use cases, validate outputs, and move from prototype to production faster.

[Start a free trial](#)



Data Link is Precisely's partner data program, giving customers seamless access to pre-linked datasets from leading third-party data providers — all through Precisely's unified infrastructure. Rather than managing separate vendor contracts and integrations for each enrichment need, Data Link customers can discover, license, and access complementary datasets from multiple providers with unmatched speed and ease. Partner datasets are pre-linked to Precisely data via PreciselyID, dramatically reducing onboarding complexity and accelerating time-to-value.

Featured APIs

Precisely's geo addressing and data enrichment solutions enable organizations of all sizes to increase the use of address data and quickly associate rich, relevant contextual information.

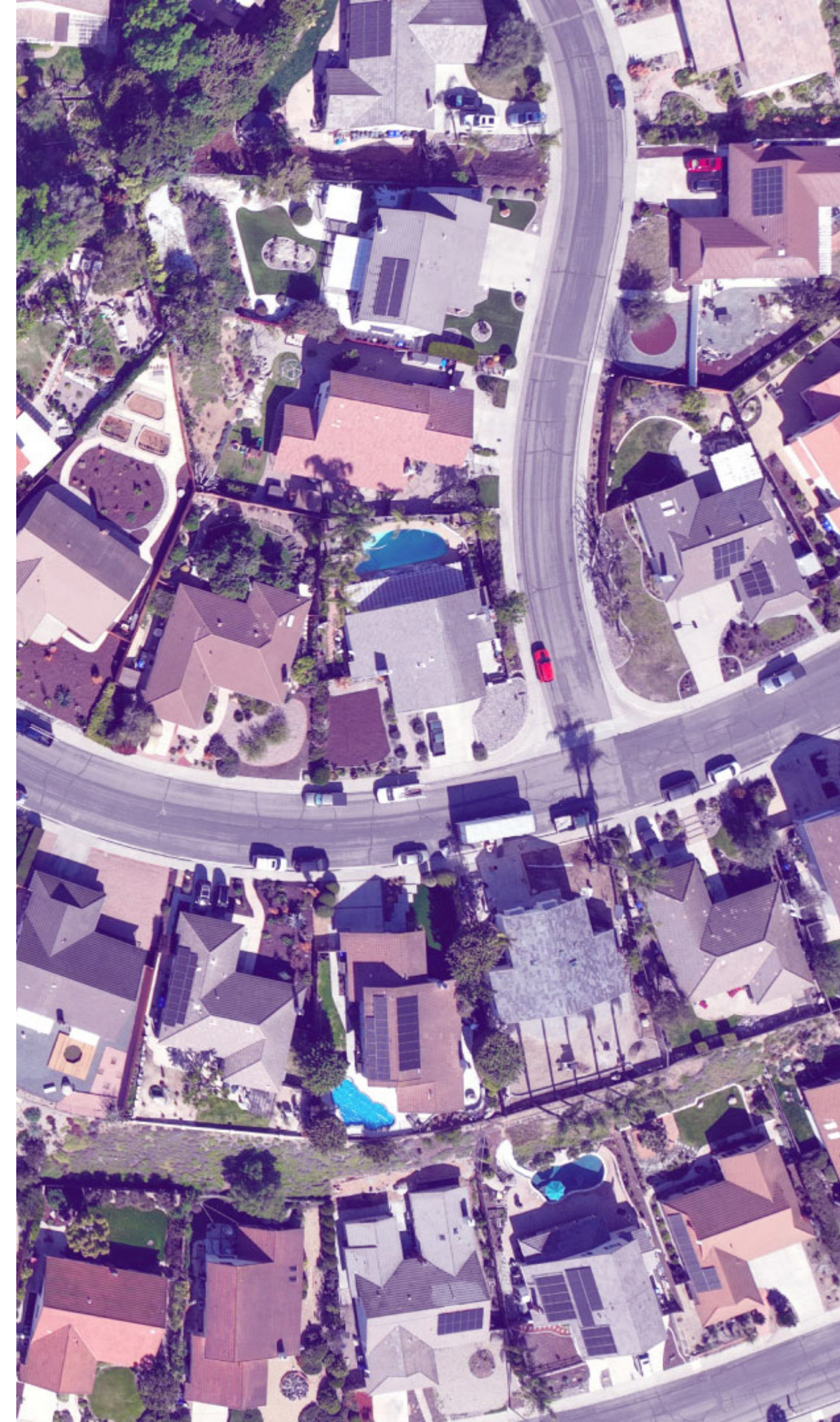
[Learn more about our APIs](#)

Spatial Analytics APIs

Precisely's Spatial Analytics APIs enable developers and data teams to embed location intelligence directly into applications and data pipelines — without requiring specialized GIS tools or infrastructure. The APIs support a full range of spatial operations, including proximity analysis, distance-to-nearest calculations, buffer and overlay analysis, travel time boundaries, routing, and raster processing. Deploy them natively in the cloud or in private environments across AWS, Azure, and GCP, or integrate them into modern data platforms like Databricks for ultra-scalable spatial processing at enterprise scale. Use cases span site selection, risk assessment, territory planning, network optimization, and AI feature engineering — wherever the spatial relationship between people, places, and assets drives the decision.

Data Graph APIs

The [Data Graph API](#) exposes a vast network of connected data and leverages pre-established relationships between datasets for easy enrichment and accessibility. Available data families include Properties, Demographics, Audiences, Places, Risks, Streets, and Boundaries — spanning hundreds of datasets. Each dataset is linked via PreciselyID, a unique persistent identifier for every addressable location, enabling seamless cross-dataset enrichment across the entire Precisely portfolio.



Conclusion

With Precisely APIs, you can cleanse, consolidate, geocode, and enrich massive data volumes in a fraction of the time — all within a single framework. As organizations build AI-powered applications, automate critical decisions, and compete on the quality of their analytics, the data context that APIs deliver becomes a strategic asset. Precisely provides the breadth, accuracy, and pre-linked connectivity to make enrichment fast, reliable, and scalable.

Join the ranks of leading companies that put their trust in Precisely.

Explore our APIs and sample data free at developer.precisely.com





As a global leader in data integrity, Precisely ensures that your data is accurate, consistent, and contextual. Our portfolio, featuring the Precisely Data Integrity Suite, brings together software, data, and data strategy consulting services. This unique combination enables organizations to move to Agentic-Ready Data, the highest-quality of data that is integrated, governed, and enriched for AI, automation, and analytics initiatives at enterprise scale. Over 12,000 organizations in more than 100 countries, including 95 of the Fortune 100, trust Precisely to support some of the world's most complex, regulated, and mission-critical data environments.

Learn more at www.precisely.com.

©2026 Precisely. All other company and product names used herein may be the trademarks of their respective companies.