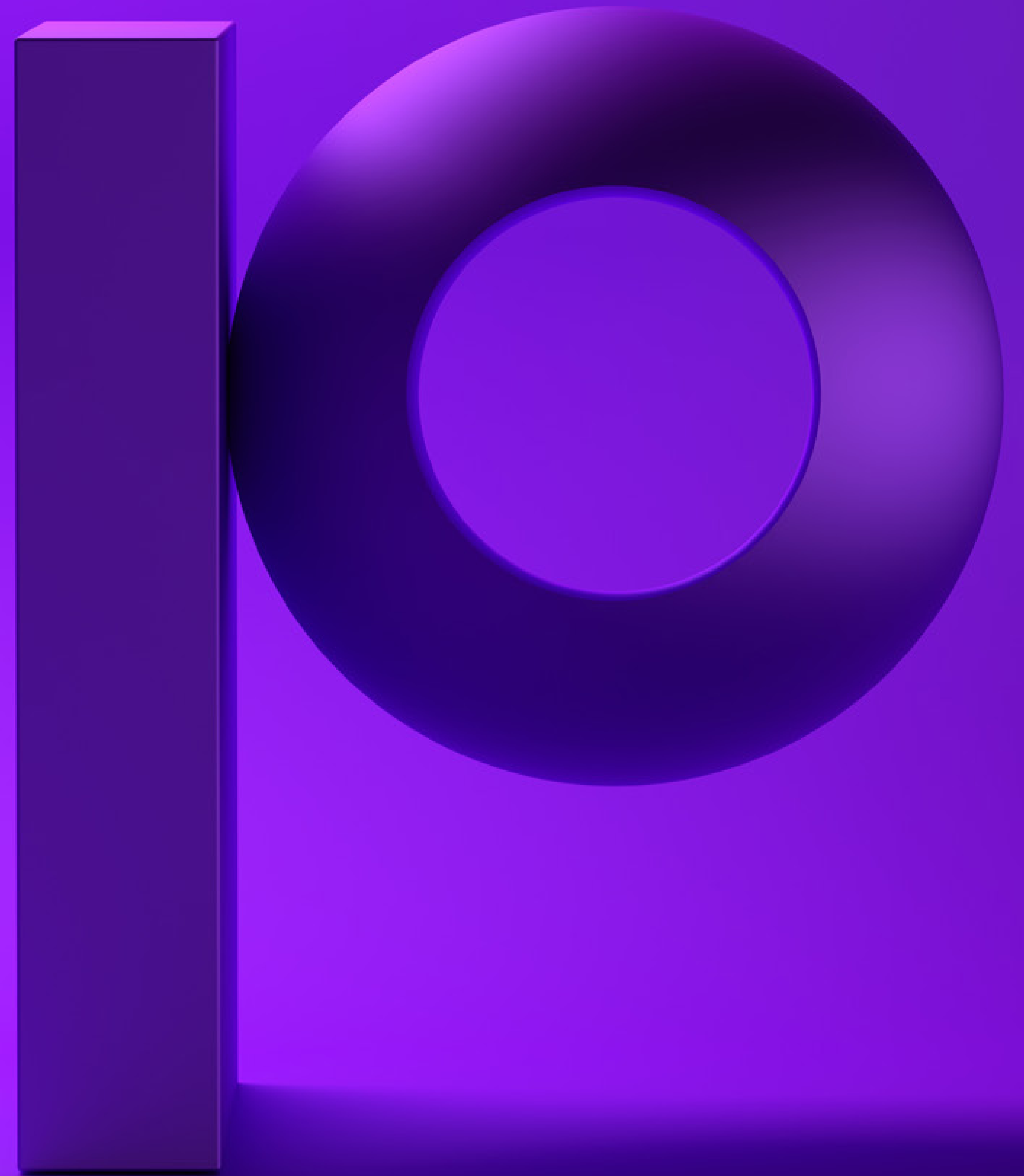


precisely

Cutting Through the Chaos: The Case for Comprehensive AI Governance

Reduce risk and drive innovation with an agile
and standardized AI governance framework.



Introduction

Many organizations have moved beyond AI experimentation and are now integrating it into their core business operations. As organizations define their AI strategies and prioritize high-impact use cases, a robust AI governance framework is no longer optional – it's essential.

Good data remains the starting point for effective AI, and the 'garbage in, garbage out' principle still applies. However, AI governance extends far beyond good data. It demands oversight across the entire AI lifecycle, from training to deployment and beyond. Organizations must ensure their models are not only accurate and valuable, but also evaluated for risk, fairness, and transparency with clear accountability into how models are performing and being used.

Without a centralized governance framework, organizations risk "model sprawl", a proliferation of AI models in silos, with little visibility into versions, ownership, or performance. With the emergence of agentic AI (systems capable of making and executing decisions without human oversight), the need for structured transparency and accountability becomes even more critical to ensure models are being used responsibly and for the intended purpose.

Additionally, evolving regulations such as the EU AI act are accelerating the need for AI governance frameworks to be agile, featuring standardized processes that can adapt quickly to new regulatory demands. As AI use extends beyond technical teams and impacts decisions related to ethics, privacy, security, and business strategy, a broader group of stakeholders – including legal and compliance, to data science, risk, and executive leadership – must now be engaged. Frameworks must not only adapt quickly to new compliance demands but also provide transparency and accountability across these groups to ensure AI is both valuable and responsibly deployed.

Finally, organizations are struggling to find repeatable, agile practices that support the change management and AI literacy required for long-term AI success and growth – critical ingredients for scalable, enterprise-ready AI adoption.

Key Challenges of AI Governance

Organizations deploying AI models face complex challenges that require robust governance frameworks to manage technological risks such as cybersecurity threats and the potential for misuse, ensure transparency, and maintain regulatory compliance – while fostering innovation.

Model sprawl and visibility gaps

Without a centralized and standardized AI governance framework, things can get messy fast. Building more and more AI models in silos leads to model sprawl and visibility issues, resulting in unmanaged model inventories without a single source of truth. Without centralized model governance, it is difficult to understand what models exist, which versions are being used, or who made them. Teams end up deploying similar models, wasting time and resources, and creating confusion.

Additionally, having disparate AI governance frameworks across teams creates duplicate work, errors, and inefficiencies. Teams waste time revising policies, controls, and documentation to match changing requirements, which leaves compliance gaps, adds unnecessary administrative work, and inhibits innovation.



Compliance and transparency challenges

Model sprawl also makes compliance significantly more challenging. When model information is scattered across various platforms, companies struggle to show that they are consistently adhering to AI ethics guidelines, regulations, and data protection laws. They're also unable to effectively assess risks, answer questions from regulators, and explain how they are avoiding bias and using AI responsibly.

When organizations use AI for critical functions, it's imperative that they monitor model performance across the business. Teams need to observe and track data sources, training and validation datasets, and outcomes to ensure that AI is being used responsibly and delivering value as intended.

Given that AI models constantly evolve as they learn from new data, having immediate visibility into model usage and behavior is essential. Yet, achieving this level of oversight often involves manual effort, complex processes, and systems that are expensive to maintain and difficult to manage.

Visibility challenges are compounded by the number of stakeholders involved as AI expands into business-critical areas. Coordination across newly formed AI councils, legal departments, data science teams, privacy officers, and various functional and business units becomes increasingly complex.

Without a centralized system to govern models and workflows, accountability becomes unclear - no one knows who owns which models, who should address emerging risks like bias or drift, or whether the models are still performing as intended. In some cases, outdated models may continue running without oversight, creating risk around performance, bias, and compliance, just to name a few.

To make matters more difficult, processes for assessing risks, approving models, and overseeing their use are often inconsistent or poorly defined. This fragmentation slows decision-making and increases the likelihood of compliance failures, audit gaps, and internal confusion, ultimately hindering AI effectiveness and undermining trust in its outcomes.



Lack of organizational readiness and AI literacy

Organizations are eager to advance their AI initiatives, but most lack the expertise to determine if they are truly AI-ready. Methodologies to evaluate the underlying technology and AI-specific processes and resources needed to support responsible governance are often missing or underdeveloped. Without a clear understanding of what readiness entails, teams risk moving forward without the necessary controls, consistency, or accountability in place.

Compliance regulations such as the EU AI Act further elevate the importance of readiness. These regulations require that all organizations providing and deploying AI ensure that teams across the enterprise share a common understanding of AI model capabilities, limitations, and responsibilities. Without this foundational literacy, organizations face confusion, gaps in oversight, and increased risk when models are used to drive business-critical decisions.

A lack of organizational support and commitment can further hinder progress. Charging ahead without an effective AI readiness strategy can have significant consequences, ranging from compliance failures and ethical missteps to stalled adoption and wasted investment. In these environments, the absence of change management and limited AI literacy across functions become key barriers, preventing organizations from successfully scaling AI initiatives with confidence.



Addressing the Core Challenges of AI Governance with a Unified, Scalable Approach

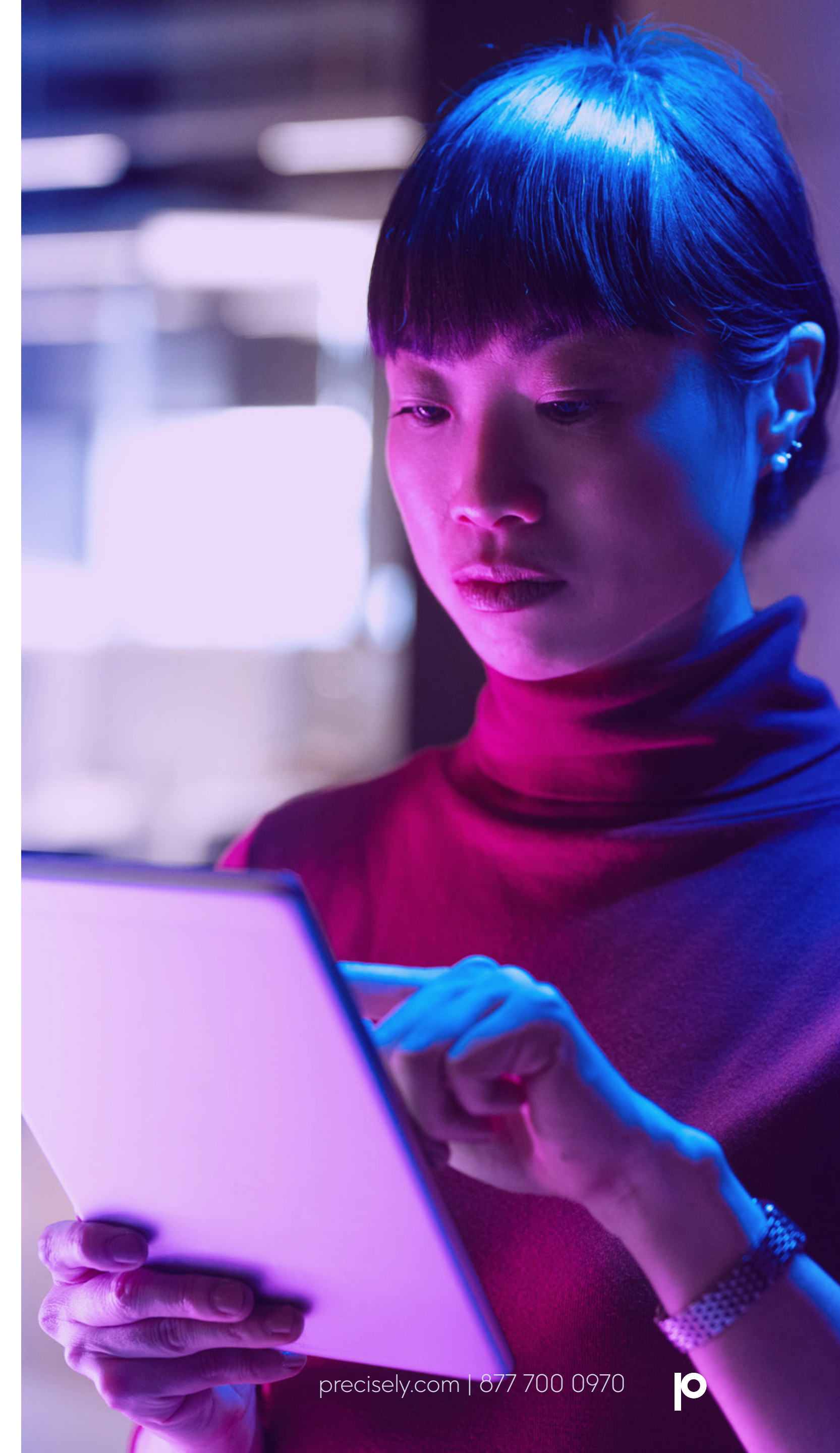
As organizations embed AI into critical business operations, governance challenges have become more urgent and complex. Meeting today's demands requires a comprehensive, agile approach that integrates centralization, transparency, and strategic alignment into one cohesive framework.

Centralize and Standardize AI Governance

When AI models are developed and deployed in disconnected silos, organizations quickly face “model sprawl”—an uncontrolled proliferation of models with no clear visibility into what exists, who owns them or whether they meet compliance and performance standards. Without a centralized governance structure, teams often duplicate efforts unknowingly, wasting time and resources while introducing inconsistencies that put the business at risk.

A unified governance platform solves this by creating a single, configurable environment for managing all AI models and processes. This centralized view becomes the authoritative source for metadata, such as lineage, ownership, objectives, and visibility into data quality of source data allowing stakeholders to identify redundancies, enforce version control, and eliminate manual reconciliation across teams.

This consolidation of AI model governance in a single solution improves oversight and significantly reduces operational inefficiencies. Instead of reinventing governance processes for each new model or business unit, organizations can apply standardized policies, templates, and workflows that scale across the enterprise. This eliminates redundant reviews, reduces administrative overhead, and frees teams to focus on innovation – not maintenance.



Improve Transparency and Accountability

As AI models evolve and become more deeply embedded in business operations, transparency and auditability are critical for both internal alignment and external compliance. Yet many organizations struggle to track performance, ensure explainability, and demonstrate ethical AI usage due to siloed tools and fragmented governance practices.

What is needed is a governance approach that unites business and technical AI stakeholders around a shared view of model performance, usage, and compliance. With automated workflows, defined approval checkpoints, and real-time monitoring, teams gain clear visibility into every stage of the AI model lifecycle—from design and validation to post-deployment outcomes. These workflows reduce the burden of manual documentation and piecemeal audits, allowing risk assessments, performance reviews, and compliance checks to happen efficiently and consistently.

This integrated model also makes accountability more actionable. Responsibilities are clearly assigned, decisions are traceable, and alerts are triggered when data issues may impact your model performance. That means less time chasing down problems and more time proactively addressing them, closing the loop on performance management and risk mitigation.



Building Organizational Readiness for Scalable, Responsible AI

Of course, even the best tools can fall short without the organizational alignment to support them. Many enterprises lack the internal expertise or cross-functional coordination to evaluate AI readiness, educate stakeholders, and drive strategic change.

Establishing a foundation for scalable, responsible AI requires expert guidance: structured assessments of current maturity, roadmaps for regulatory compliance, and programs that increase AI literacy across roles. Through tailored workshops, templates mapped to leading standards, and change management support, organizations can bridge the gap between intent and execution, creating a culture where AI initiatives are compliant, confident, explainable, and trusted.



Summary

AI is no longer experimental – it's operational, critical, and increasingly under scrutiny. Without an agile and standardized governance framework, organizations face real risks: unchecked model sprawl, inefficient oversight, and growing exposure to regulatory penalties. Transparency, traceability, and trust are not optional – they're foundational.

Precisely helps organizations address the unique challenges of AI governance with a unified, lifecycle-wide approach. Our Data Integrity Suite provides centralized model oversight, integrated data quality and observability, and configurable workflows that bring both consistency and agility to compliance. By bridging technical and business metadata, automating approvals and monitoring, and enabling cross-functional collaboration, we empower you to build trust in your AI systems from development through deployment and beyond.

Coupled with our expert consulting team, Precisely also accelerates your AI readiness. We guide you through assessments, design scalable frameworks aligned to regulations like the EU AI Act and the National Institute of Standards and Technology (NIST) to equip your team with the AI literacy and processes needed for lasting success.

AI governance is not just a checkbox – it's your organization's blueprint for ethical, effective, and accountable innovation. As regulatory pressure mounts and the pace of AI adoption accelerates, your governance framework must evolve just as fast.

Precisely helps you do just that – transform AI governance from a reactive obligation into a pro-active advantage. Let's build a future where your AI is not just governed – but trusted.



About Precisely

As a global leader in data integrity, Precisely ensures that your data is accurate, consistent, and contextual. Our portfolio, including the Precisely Data Integrity Suite, helps integrate your data, improve data quality, govern data usage, geocode and analyze location data, and enrich it with complementary datasets for confident business decisions. Over 12,000 organizations in more than 100 countries, including 95 of the Fortune 100, trust Precisely software, data, and strategy services to power AI, automation, and analytics initiatives. Learn more at www.precisely.com.

www.precisely.com