

precisely

# Precisely Migration and Optimization Services

Eliminate downtime and lost productivity created by migrations and required tuning and maintenance of your IBM i systems

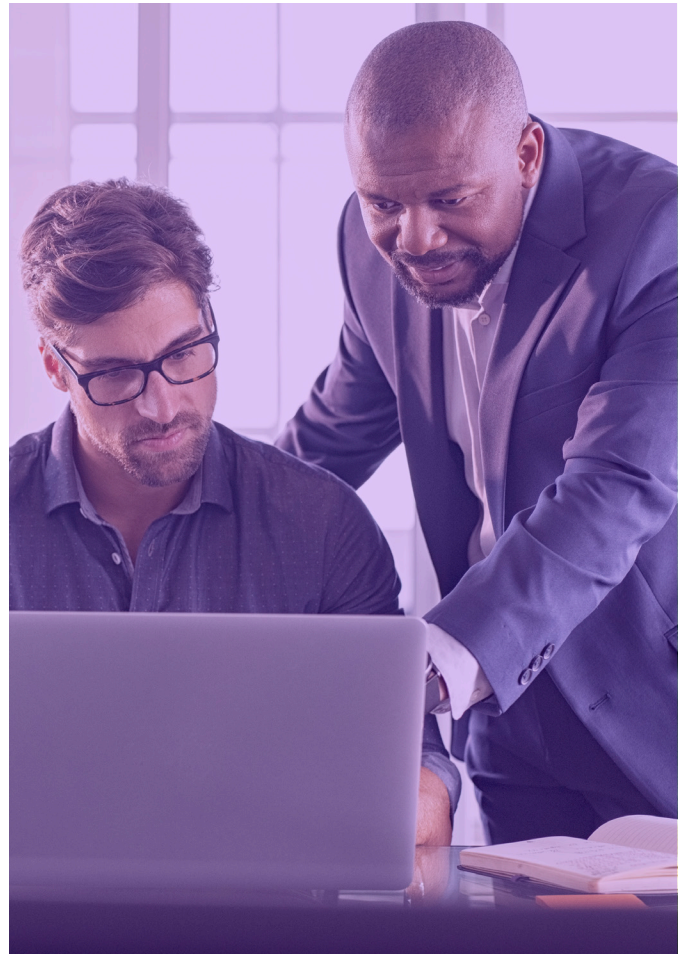
You depend on your IBM i systems to always be available. Yet maintenance is inevitable. Precisely's IBM i Migration and Optimization Services can solve the puzzle.

Some critical IBM i maintenance work, such as migrating servers and compressing data, has traditionally required lengthy system downtime. In today's 24x7 environment, that's not acceptable.

Even when businesses could tolerate a shutdown, maintenance jobs used to require that IT staff work at night, over a weekend, or possibly even through a full holiday weekend if the work couldn't be completed in two days. That was costly, not to mention a strain on staff.

Precisely's Migration and Optimization Services for IBM i overcome these challenges and keep your systems humming by performing the necessary work in the background or on a secondary server while your production systems remain active. The following three services are available:

- Migrate While Active Service
- Compress While Active Service
- iOptimize Service



## Value. Delivered.

- Keep your business running while performing vital IBM i maintenance
- Reduce the strain on your IT staff
- Utilize extensive task-specific experience and expertise
- Minimize storage usage
- Monitor and optimize system performance

## Eliminate Downtime from Migrations

Migrations are inevitable. Eventually, you will have to upgrade or replace outdated technologies or swap in a higher performance server to manage a greater volume of business. Other times, you may determine that it would be economical to consolidate servers or adopt virtualization technology. And those are just a few of the many reasons for server migrations.

In the past, those migrations required saving data to offline media, installing the new system, and reloading the data. Because of the required downtime, most migrations were performed on weekends or outside of normal business hours, with a lot of off-hours overtime work for the IT staff, and possibly third-party consultants as well.

In addition, traditional migrations were fallible, with as many as 42% of professionals reporting a migration failure in a recent Precisely survey. Consequently, migrations often had to be redone, increasing the cost and downtime involved in the migration.

Adding to the challenge, many organizations no longer have **any** “non-business hours” when they can shut down their systems to perform a migration. Tools and methodologies that deliver better IT resilience during migrations, while minimizing the need for downtime are needed.

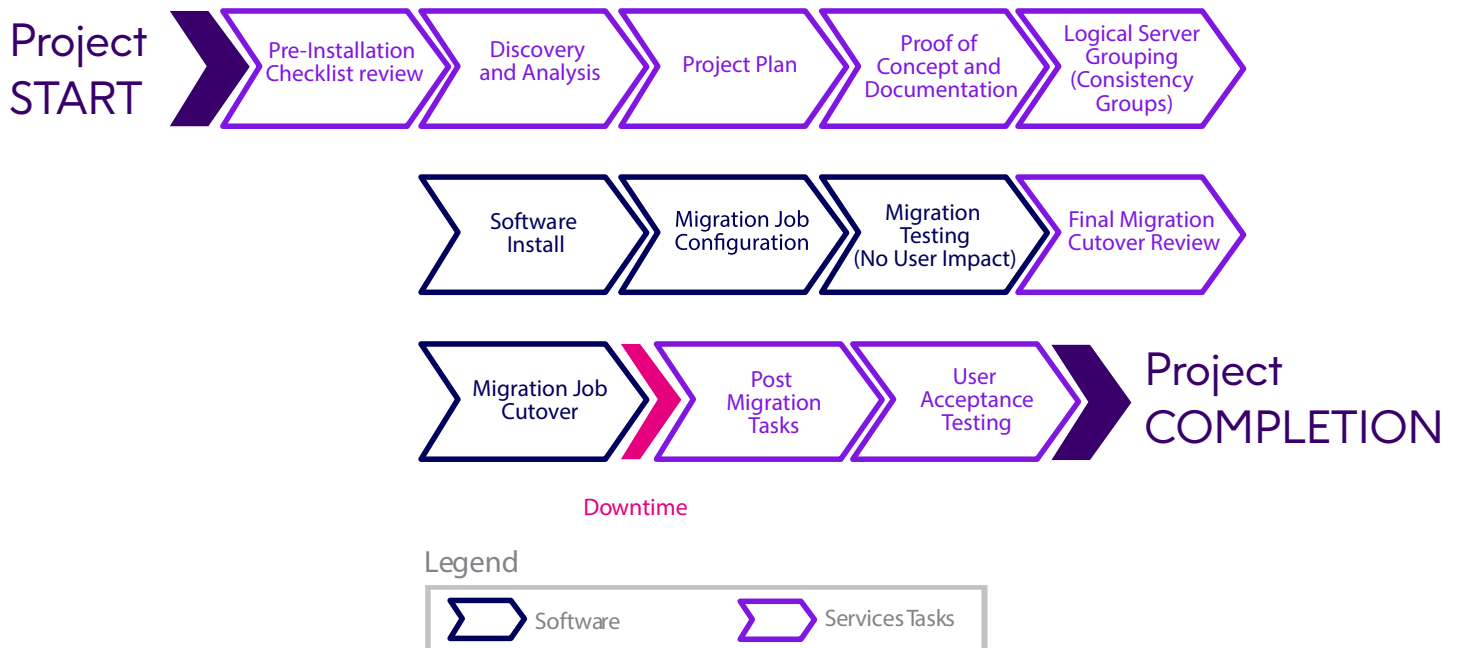
Precisely has a solution. Our **Migrate While Active Service** incorporates comprehensive planning and testing to ensure data is accurately moved before the upgrade or migration is complete.

Migration experts use Precisely’s high availability technology to replicate data and applications to the new system, without stopping production workloads. That replication can occur using virtually any topology—one-to-one, many-to-one, one-to-many, cascaded and more. We can also migrate between differing storage and server hardware, and between IBM i OS versions, providing the flexibility required to meet your unique needs.

After replication synchronizes the old and new systems, they can run in parallel while you validate that applications and data are ready for cutover. The two systems will remain synchronized the whole time. After verifying that the data transfer is complete and accurate, a Precisely expert will complete the final cutover and decommission the old system. The entire process requires almost no operational downtime.

### Benefits

- Eliminate virtually all migration downtime
- Perform migrations during normal business hours, with minimal disruption to operations
- Take as long as necessary to validate a successful migration before cutting over
- Reduce labor costs
- Minimize the risk of migration failures
- Simplify migrations



## Free Up Disk Space without Downtime

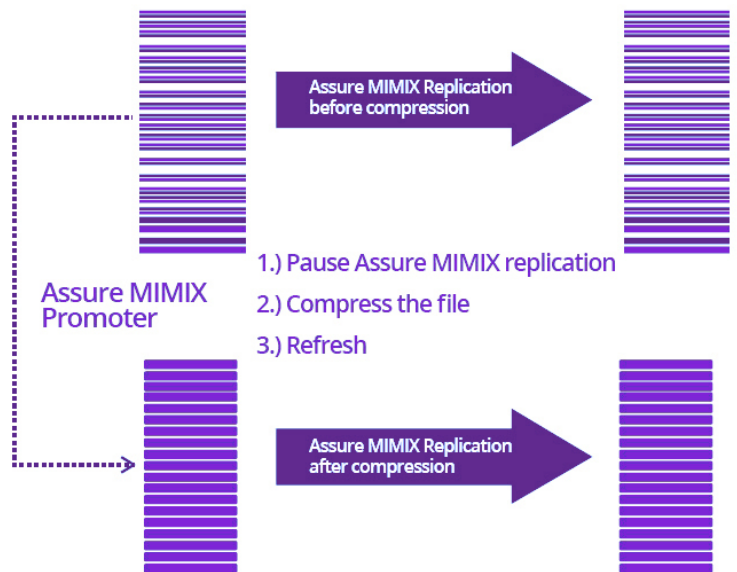
Over time, IBM i data files can include excessive wasted space as the storage occupied by logically deleted records is not released for re-use. Freeing that space using a dedicated IBM i compression tool such as RGZPFM may require unpredictably long system outages. This is unacceptable for most organizations.

In contrast, with the **Compress While Active Service**, Precisely Global Services experts will use Assure MIMIX Promoter Copy Active File Technology to compress your data. These operations take place in the background, without interrupting business operations. In a high availability environment, our experts will compress both the production and recovery servers. Assure MIMIX Promoter Copy Active File Technology allows Precisely experts to choose the compression technique that will least impact your operations while the work is being done:.

- **Copy active records** of a production file to a temporary file and switch the temporary file to production at a convenient time.
- **Compress deleted records** in a replicated environment and sync the changes back to the production library.

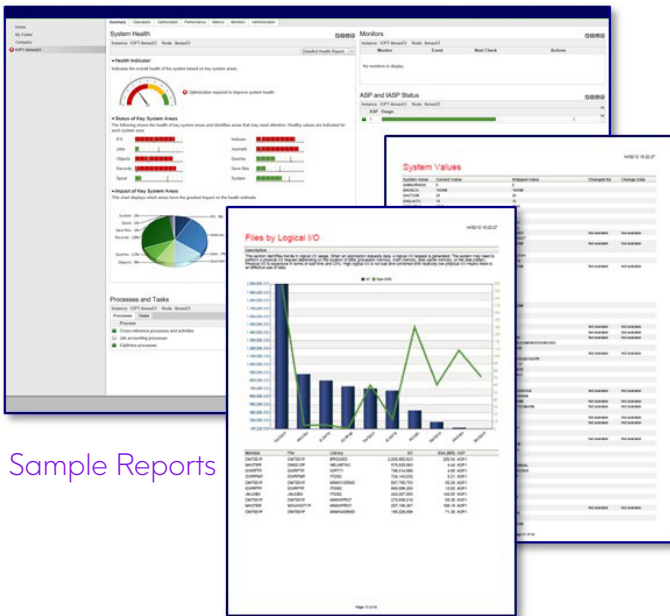
### Benefits

- Reduce storage costs by reclaiming wasted space
- Leverage specialized experience and expertise
- Reduce labor costs
- Eliminate the need for downtime during compressions
- Perform compressions during normal business hours



## Optimize the Health of IBM i Servers

The performance of your applications depends on the health of your servers. With the **iOptimize™ Service**, Precisely's experts employ our unique Assure iOptimize tool to continuously optimize your IBM i servers for improved efficiency and optimal resource utilization. The service also provides a Health Report containing information that can be invaluable when making critical infrastructure decisions.



The iOptimize Service provides a number of valuable deliverables, including:

**Audit and Analysis.** Current cross-reference information will be at your fingertips with aged analysis of objects, IFS, etc. Change Analysis tracks changes in disk usage. Metrics provide continuous surveillance, auditing, cross-referencing and analysis on the use, growth and growth rate of objects and files. You can monitor changes at the domain, library, object or profile levels, or even more granularly at the job accounting level.

**Forecasting.** Object growth and system requirement forecasts make capacity planning easier and more effective. Precisely experts can proactively manage your systems by setting thresholds and parameters for system utilization.

**Real-Time Control.** Assure iOptimize recommends “best courses of action” to enhance performance, optimize disk usage and improve CPU utilization. With your authority, Precisely experts can accept, reject or modify the recommendations and automatically execute recommendations in real time, while users remain on-line and active.

**Autonomic Optimization.** Assure iOptimize continually optimizes your server by monitoring, managing and enforcing rules we set for you set based on history, business requirements and policies.

**Compliance Support.** Assure iOptimize maintains complete activity audit trails and provides a view-only mode, helping you to meet stringent regulatory and SLA requirements.

### Benefits

- Continuously optimize the performance of your IBM i systems
- Minimize the need for upgrades
- Improve audit compliance
- Leverage specialized experience and expertise

### Keep Your Systems Working

Your IBM i systems require regular tuning, upgrades and maintenance. Your business can't afford downtime while that's happening. With Precisely's IBM i Migration and Optimization Services you can minimize downtime and maximize your productivity.