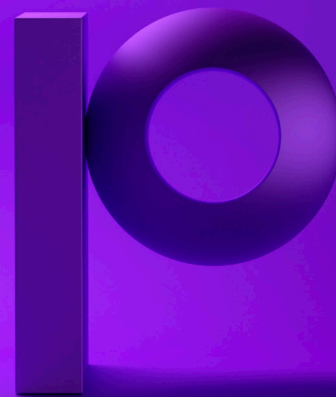




MapInfo Pro Drone



precisely

# MapInfo Pro Drone

Identify risks and opportunities with images specific for your business needs

## Leverage over 10,000 certified, professional drone pilots across the globe and gain access to custom imagery specific to your business needs

Through a partnership Icaros, a leader in the drone services industry, Precisely can help organizations discover new and improved ways to efficiently inspect and analyze real estate, job sites, cell phone towers, power lines, oil and gas pipelines, farms, as well as other structures.

MapInfo Pro Drone is a simple, safe, and professional end-to-end drone data collection and mapping solution. Through a simple user interface built into MapInfo Pro, drone flights can be deployed almost anywhere in the world to collect high-resolution imagery, LiDAR, and video. Imagery can be collected in RGB, thermal, Infrared (IR), and multispectral, enabling a myriad of maps and digital terrain products to be produced. With improved, geospatial accuracy, sites and structures can be compared over time for maintenance issues, inspection of anomalies, remediation effectiveness, and for government compliance.

## Drone imagery on demand

### A complete turnkey solution

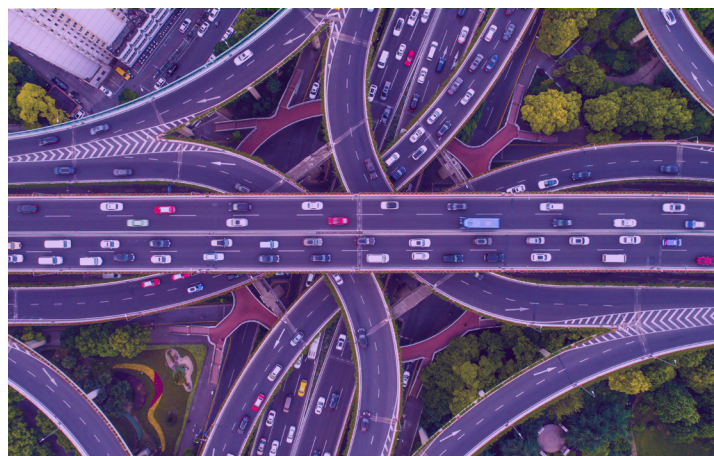
Simply complete a project request and click on the "order project" button and MapInfo Pro Drone does everything else. There's no need for in-house experts. You don't need to buy drones, sensors or expensive image processing software, no matter how simple or complex the job.

### Access industry leading specialists

MapInfo Pro Drone comes with access to a network of over 10,000 certified, professional drone pilots across the globe who are ready to acquire imagery and terrain data. Image processing is performed in the cloud and quality assured by geospatial experts.

### Time series data acquisitions

Fly over flight drone data is an empowering storytelling tool enabling users to focus on critical areas of interest and track changes over time. Highly accurate orthomosaic maps can be produced to enable precise analysis and measurements.



## Easy access to custom imagery

MapInfo Pro Drone makes it easy to deploy drones to almost any location in the world and obtain low-cost high resolution geospatially accurate imagery, video, LiDAR, and maps.

## How it works

The MapInfo Pro Drone App is free to download. You'll only pay for imagery and processing that you order through the simple online project-by-project ordering process. Each project is uniquely priced based on its size, location, and complexity. It gives you the ability to approve project quotations before projects are dispatched and flown.

MapInfo Pro users simply select an area of interest on an existing base map. Then fill in a project request form and submit it to get a fast project quotation. Once you approve the quotation, MapInfo Pro Drone deploys one or more drones to collect your drone imagery over your project area. Email communications keep you aware of project status from initial kickoff to final product delivery.

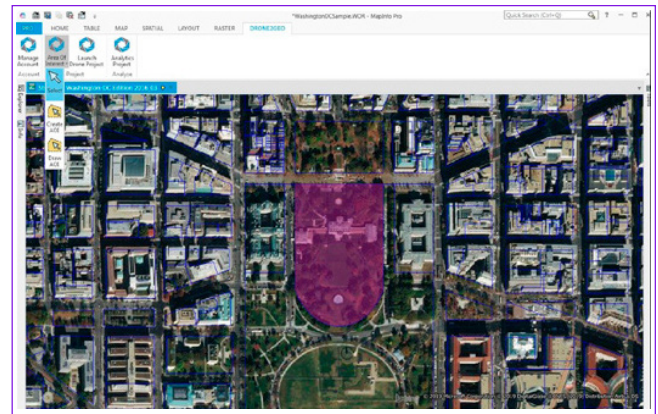
### Access Drone tools directly from MapInfo Pro menus

MapInfo Pro Drone installs as a new add-in with four new buttons on the MapInfo Pro ribbon. The buttons guide you from setting up your account to creating an area of interest to defining information about your project. The last button gets you access to the optional analytics and tasking application.

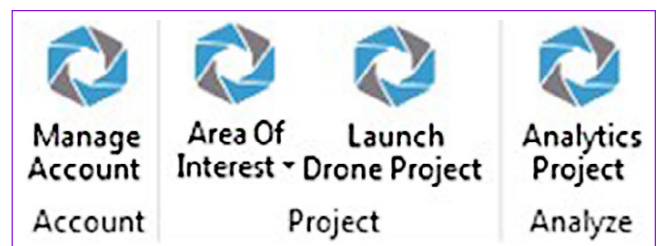
### Any project in five easy steps

After activating your MapInfo Pro Drone account, you can launch any project, quickly and simply:

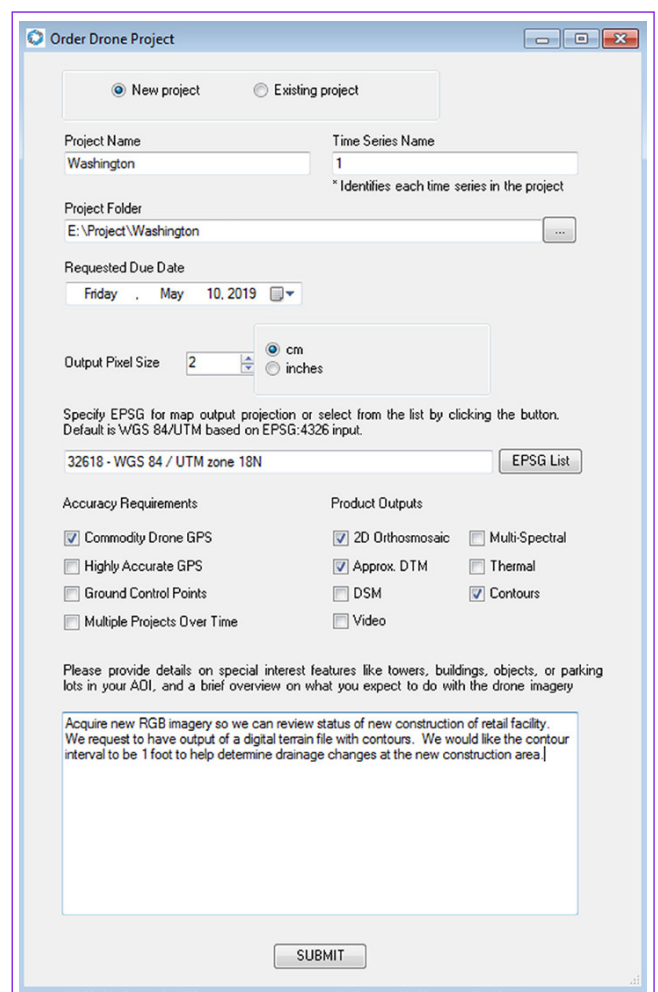
- **Step 01:** Define an area in a MapInfo Pro base map where you'd like new high resolution imagery, video, and terrain maps.
- **Step 02:** Fill out a project request form (shown on right) to tell us about your project details, and select your desired outputs. For example, you'd like a contour map, or a thermal map, or a video.
- **Step 03:** Submit your project request. Usually within 24 hours, you will receive an email with a project cost quotation based on the location and size of your project.
- **Step 04:** Simply press the ACCEPT button on your quotation email and a drone service provider will be deployed to collect your data. Once collected, all data will be processed and quality assured by geospatial experts before the final results are sent to you.
- **Step 05:** Upon project completion, you will receive a "project complete" email, typically in just a couple of days. The email will contain links to your outputs, so just click on the links to download your maps, models, video, or other requested outputs to your MapInfo Pro system.



Launch projects within MapInfo Pro



Easy to use Drone Tools



**Order Drone Project**

☒ New project ☐ Existing project

Project Name: Washington Time Series Name: 1  
\* Identifies each time series in the project

Project Folder: E:\Project\Washington

Requested Due Date: Friday, May 10, 2019

Output Pixel Size: 2 cm

Specify EPSG for map output projection or select from the list by clicking the button. Default is WGS 84/UTM based on EPSG:4326 input.  
32618 - WGS 84 / UTM zone 18N EPSG List

**Accuracy Requirements**

- ☒ Commodity Drone GPS
- ☐ Highly Accurate GPS
- ☐ Ground Control Points
- ☐ Multiple Projects Over Time

**Product Outputs**

- ☒ 2D Orthomosaic
- ☒ Approx. DTM
- ☐ DSM
- ☐ Video
- ☐ Multi-Spectral
- ☐ Thermal
- ☒ Contours

Please provide details on special interest features like towers, buildings, objects, or parking lots in your AOI, and a brief overview on what you expect to do with the drone imagery

Acquire new RGB imagery so we can review status of new construction of retail facility. We request to have output of a digital terrain file with contours. We would like the contour interval to be 1 foot to help determine drainage changes at the new construction area.

**SUBMIT**

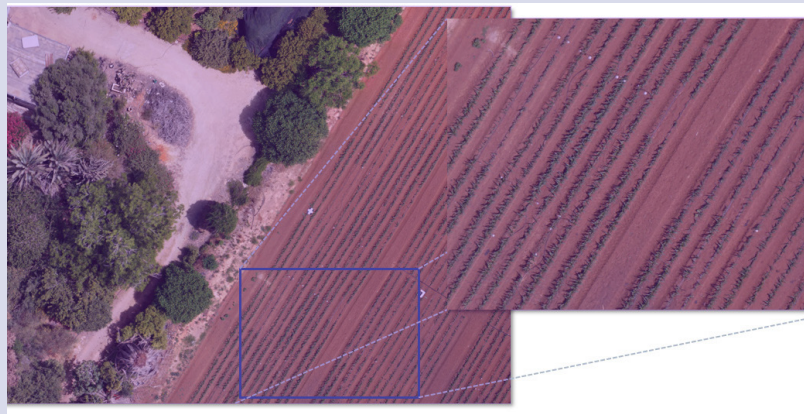
Define your project specifications



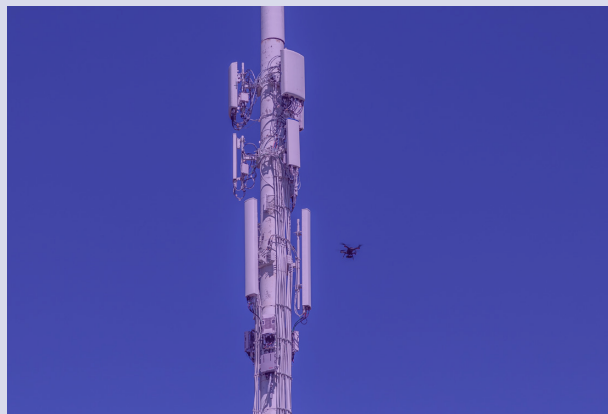
Leverage an extensive network of drone pilots to gain access to custom imagery specific to your business needs



From tracking change over time to jobsite compliance



To precision agriculture



To energy and telco asset inspections.

## Make better decisions with better imagery

Make the move to blend high-resolution acquisition and access to mapping services of MapInfo Pro Drone into existing workflows and MapInfo applications.

### Drone-acquired data

#### Imagery:

- RGB
- NIR
- Thermal
- Multispectral
- Video

#### Terrain data:

- LiDAR
- DTM
- DSM

#### Output Drone Data Products:

- 2D Orthomosaics
- Video
- Approximate DTM
- Highly-Accurate DTM
- DSM
- Contours

### Data formats

#### Specifications:

- GeoTIFF
- JPEG
- 1080p Video
- 4K Video



### Support

- Access to geospatial drone and aerial acquisition experts.
- Support available throughout the life of each drone project.

### Project-by-project purchasing

MapInfo Pro Drone App is free to download.

Each project is uniquely priced based on its size, location, and complexity and you will be able to approve project quotations before projects are dispatched and flown.