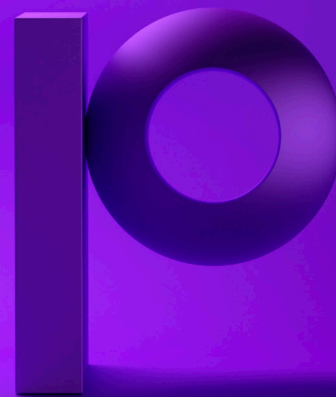




© 2020 Esri. All rights reserved.



precisely

Optimize your geocoding without altering your infrastructure

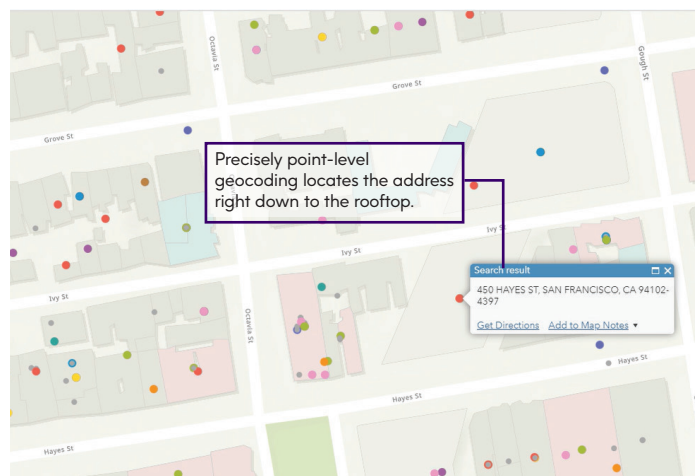
Spectrum Geocoding Connector for GIS brings a new level of accuracy to Esri ArcGIS® environments

At today's data volumes, even small error rates can lead to millions of costly mistakes. Now you can improve your accuracy without costly workarounds or changes to infrastructure. Our new geocoding connector makes it simple to access world-class Precisely geocoding directly within ArcGIS Online, ArcGIS Portal and ArcGIS Pro Desktop environments.

Power up your performance

Plug Precisely rooftop-level positional accuracy into all four types of Esri geocoding operations:

- findAddressCandidates
- geocodeAddress
- reverseGeocode
- suggest



Required Precisely geocoding solutions

You'll need one of these Precisely geocoding solutions to generate our geocodes:

- Spectrum Global Geocoding
- Spectrum Global Geocoding Software Developer Kit (SDK)
- GeoCode API

Easily integrate Precisely geocoding solutions into Esri ArcGIS®

With the Spectrum Geocoding Connector for GIS it's easy to access, deploy, and utilize Precisely geocoding within your Esri infrastructure. You can retain your software, reduce your workarounds and upgrade your accuracy. Plus, you'll benefit from some of the best match rates and coverage in the industry. Our geocoding combines extensive rooftop-level positional accuracy with throughputs that scale to the speed of big data and cloud-native environments.



Supported Esri geocoding operations

<code>findAddressCandidates</code>	Geocodes one location/address at a time
<code>geocodeAddress</code>	Batch geocodes many addresses in a single request
<code>reverseGeocode</code>	Returns address or place candidates when given X/Y coordinates
<code>suggest</code>	Provides suggested results as a user begins to input an address (through type-ahead/autocomplete)



Spectrum Geocoding Connector for GIS FAQs

- Q:** I own a Precisely geocoding product and Esri ArcGIS, why do I need this geocoding connector?
- A:** This geocoding connector will enable you to access your Precisely geocoding solution directly from Esri ArcGIS. This ensures that everyone leveraging this information across an organization can rely on consistent and accurate results that come from the same Precisely geocoding product, independent of the environment.
- Q:** What Esri products are supported by the Spectrum Geocoding Connector for GIS
- A:** • Esri ArcGIS Online
• Esri ArcGIS Portal
• Esri ArcGIS Pro Desktop
- Q:** Does geocoding with this geocoding connector impact my Esri credits?
- A:** No, Esri credits are not required to view geocodes produced by Precisely geocoding.