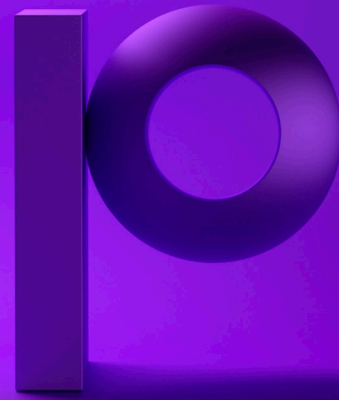


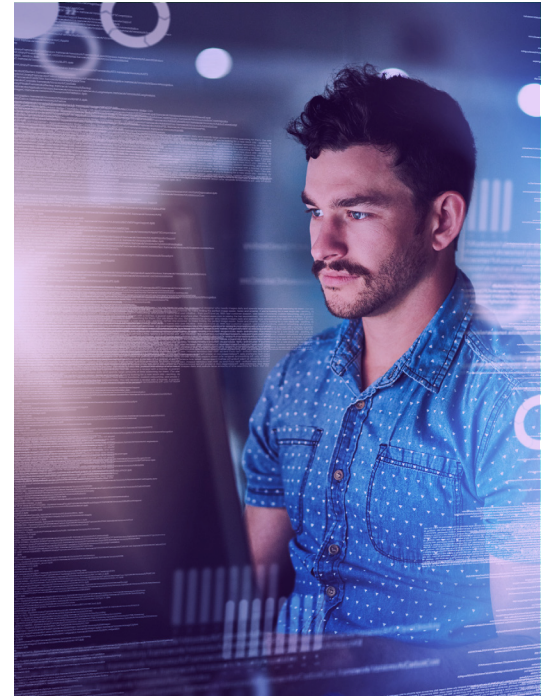
Ensure Data Quality for SAP ECC to SAP S/4HANA Modernization with Precisely Automate and Data360 Analyze



The Challenge: Bad Data in your SAP ECC system Creates Challenges throughout SAP modernization.

Modernizing your SAP environment centers on migrating from **SAP ECC to SAP S/4HANA**, a complex, high-stakes process demanding accuracy and efficiency. However, poor data quality can significantly increase migration complexity, costs, and risks, leading to:

- **Duplicate, inconsistent, or missing records**
Causing disruptions in finance activities, supply chain, and operations.
- **Incorrect formatting and outdated values**
Leads to compatibility issues with S/4HANA's new data models.
- **Performance bottlenecks**
Bad data increases storage costs and slows system response times.
- **Compliance risks**
If data governance and regulatory requirements are not enforced.
- **Error propagation**
If bad data is migrated as-is, issues persist in the new system, reducing expected S/4HANA benefits.



Complicating the challenges of SAP data quality are differing circumstances, strategies, and objectives that can vary from company to company. What are the considerations when consolidating data from multiple SAP ECC systems into a single SAP S/4HANA instance or adding data from non-SAP systems into SAP S/4HANA? Are you conducting a greenfield implementation of SAP S/4HANA or a brownfield, where you are only migrating some of the data from your old system and archiving other data? How can you maintain data integrity and quality once you have migrated to SAP S/4HANA?

Addressing and overcoming these challenges can significantly improve the chances of success for your SAP modernization efforts. One of the best ways to do this is by automating data cleansing, which can be accomplished in multiple ways using Precisely software. For example:

- **Cleansing the data in ECC prior to migration**
This is accomplished through a combination of adopting Precisely Automate for creating and managing clean SAP data and using Precisely Data360 Analyze, combined with Automate Studio to extract, cleanse, and repost the data to your SAP ECC system before migration, or as an ongoing process in your ECC environment.
- **Cleansing the data during the migration phase**
Where you extract data from SAP ECC using Automate Studio, cleanse it using Precisely Data360 Analyze, and then post it to your new SAP S/4HANA system using Automate Studio. You can also continue to use Studio and Data 360 for ongoing data automation, cleansing, and management.

Example:

A Three-Step Process for Successful Data Migration

Here is one example of what a simple, three-step process might look like for cleansing data during the migration process:

1. Extracting data from SAP ECC using Precisely's Automate Studio
2. Cleansing & Transforming Data with Precisely Data360 Analyze
3. Posting Clean Data to SAP S/4HANA with Precisely Automate Studio

Step 1: Extracting Data from SAP ECC with Precisely Automate Studio

Before cleansing and transformation, organizations need a **reliable** and **efficient** way to extract data from SAP ECC. **Precisely Automate Studio** simplifies and accelerates this step by:

- **Automating Data Extraction from SAP** – Automates the retrieval of large datasets from SAP ECC without manual effort.
- **Flexible Output Formats** – Extract data into Excel for processing in Precisely Data360 Analyze.
- **Mass Data Handling** – Easily pull thousands of records from multiple SAP tables while maintaining data integrity.
- **User-Friendly Interface** – Business users can extract SAP data without needing deep technical expertise.

Once extracted, the data is ready for **cleansing and transformation** in **Precisely Data360 Analyze** before loading into S/4HANA.

Step 2: Cleansing & Transforming Data with Precisely Data360 Analyze

Once extracted from SAP ECC, **Precisely Data360 Analyze** helps ensure **clean, properly formatted, and accurate data** before it is loaded into SAP S/4HANA. This includes:

- **Data Profiling & Validation** – Identify and correct errors, missing values, and inconsistencies.
- **Standardization & Transformation** – Convert data into the required S/4HANA formats.
- **Duplicate & Obsolete Data Removal** – Ensure only relevant, unique records are retained.
- **Audit & Compliance Features** – Simplify post-migration audits and maintain process compliance throughout data cleansing and transformation.

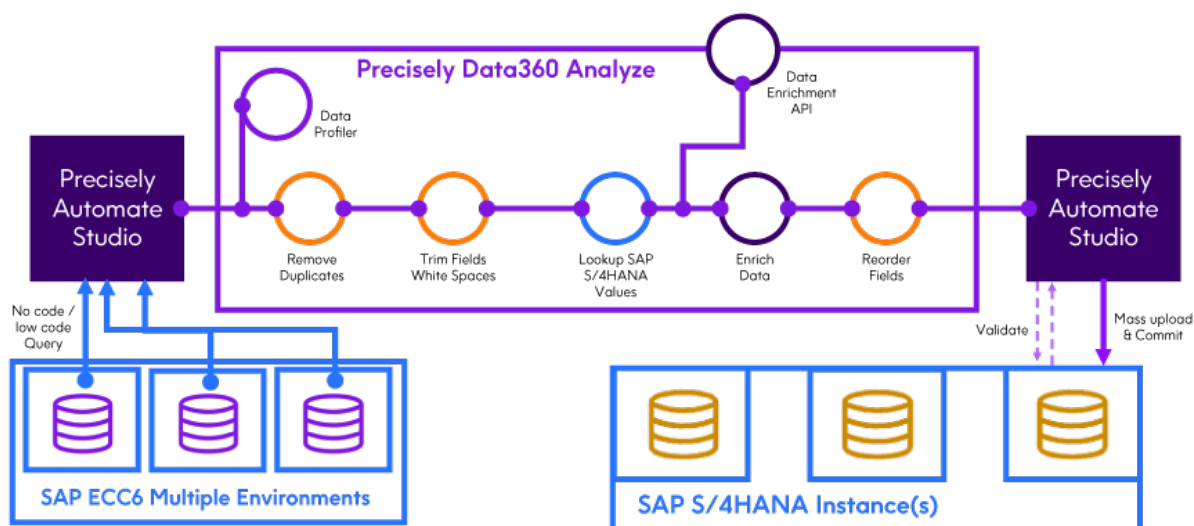
Step 3: Posting Clean Data to SAP S/4HANA with Precisely Automate Studio

Once the data is cleansed and transformed, **Precisely Automate Studio** plays a crucial role in **efficiently posting it into SAP S/4HANA**:

- **Automated Mass Data Upload** – Eliminate manual data entry by automating bulk uploads into SAP S/4HANA.
- **Data Accuracy & Validation** – Ensure correct mapping of cleansed data to new fields in S/4HANA.
- **Seamless Integration** – Load data into SAP via the SAP GUI, Fiori or GUI for HTML with minimal effort.
- **Faster Migration with Reduced Errors** – Significantly cut down time and cost associated with manual data entry and corrections.

Data Cleansing: SAP S/4 HANA Data Migration

With Precisely's Automate Studio and Data360 Analyze





Key Benefits of Using Precisely for SAP Modernization

With **Precisely Automate Studio & Data360 Analyze**, businesses benefit from:

- **Clean, Accurate Data in S/4HANA**
No legacy errors or duplicate records.
- **Faster, More Efficient Migration**
Automation reduces manual workload and human errors.
- **Improved SAP Performance & Reporting**
With optimized data structures and governance.
- **Compatibility across SAP environments**
Automate Studio can automate SAP processes in SAP ECC using the SAP GUI and SAP S/4HANA, using SAP Fiori or GUI for HTML. At the same time, business users continue to work in Excel.
- **Reduced Compliance & Security Risks**
Enforce data quality and governance policies throughout the process.
- **Business Agility & Operational Efficiency**
Ensuring a smooth transition to SAP S/4HANA with high-quality data.

A successful SAP migration requires **more than just data movement**—it demands **data accuracy, efficiency, and compliance**. **Precisely Automate Studio** and **Precisely Data360 Analyze** work together to:

- **Extract & cleanse data before migration**
- **Transform and standardize data for S/4HANA compatibility**
- **Load data efficiently into SAP S/4HANA**

Post-Migration

The combination of Precisely's Automate Studio and Data360 Analyze is designed to deliver business-friendly solutions that empower business teams to make an impact at scale. After using them to support your SAP migration, they provide significant ongoing benefits to your organization's transactional and master data. Automate Studio allows you to create and manage mass data processes in your SAP ERP system, all in a no-code/low-code environment. Data360 Analyze is a powerful tool that delivers repeatable solutions for ongoing data modernization, transformation, and analysis that can help address data challenges across your SAP landscape and beyond.

Conclusion: Consider a Smarter Approach to SAP ERP Modernization

Modernizing your SAP environment is an excellent opportunity to advance your overall SAP automation and data integrity goals and objectives. With Precisely Automate, you can adopt automation to help improve data quality during migration and continue leveraging the advantages of process automation in your SAP S/4HANA system to improve process efficiency and data integrity while gaining business agility.

With Precisely positioned at the heart of your SAP modernization and ongoing IT improvement efforts, you will gain the data integrity you need to be ready for an AI-centric future.

By leveraging Precisely's end-to-end automation platform, data integrity solutions, and strategic services, companies can ensure a smooth, **error-free SAP modernization—maximizing their ERP investment and operational success.**

About Precisely Automate Studio – Automate Studio is the premier Excel-to-SAP solutions platform that enables business users to automate and simplify complex SAP business processes and make mass data changes quickly and easily. Studio automates data collection, validation, and movement with SAP data management solutions, saving you significant time and money and increasing process efficiency. Automate Studio enables business users to interact with SAP from familiar interfaces like Microsoft Office. By automating business processes, Studio allows you to become more efficient in SAP data management tasks while improving SAP data integrity and accuracy.

About Precisely Data 360 Analyze – Data360 Analyze is a first-of-its-kind solution that integrates self-service data prep with advanced data quality and robust data governance. This gives you the ability to process and transform data and to rapidly build data-rich, analytically complex applications, improving productivity and dramatically lowering costs. You can access virtually any data source and easily acquire and cleanse that data in a fraction of the time. Users can create a comprehensive source for analysis without incurring the infrastructure costs and time required by traditional warehouses and ETL. Our approach enables users to visually collaborate as they acquire, prepare, and analyze data from disparate sources and deliver these applications to data visualization tools, direct to end users or back to operational systems.