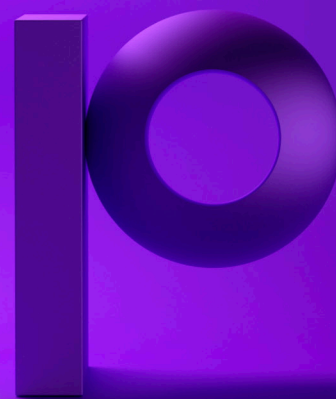


# Enforcive Enterprise Security Suite



## End-to-End Security and Compliance Management for the IBM i Enterprise

The Enforcive Enterprise Security Suite for IBM i is a comprehensive and easy-to-use security and compliance solution for IBM i (AS/400). With over twenty fully integrated GUI-controlled security, auditing, and compliance modules, this software suite enables system administrators, security officers and auditors to easily manage security and compliance tasks efficiently and effectively.

## Managing Security: Beyond the Green Screen

In response to today's world of privacy breaches, complex regulatory requirements and evolving threats, Enforcive enables security officers to identify suspicious behavior on the network, drill down to the appropriate user, IP address or object and take appropriate action quickly. The enterprise-wide perspective that Enforcive provides, significantly enhances current green screen reporting capabilities.

Enforcive Enterprise Security is fully GUI-enabled. This allows security officers to easily roll out access management policies and makes journals and logs easy to manage and interpret. Security officers can monitor high-level policies enterprise-wide and drill down to the user or object in a matter of seconds. It also gives organizations the opportunity to involve "non-green screen" IT professionals in security related tasks.

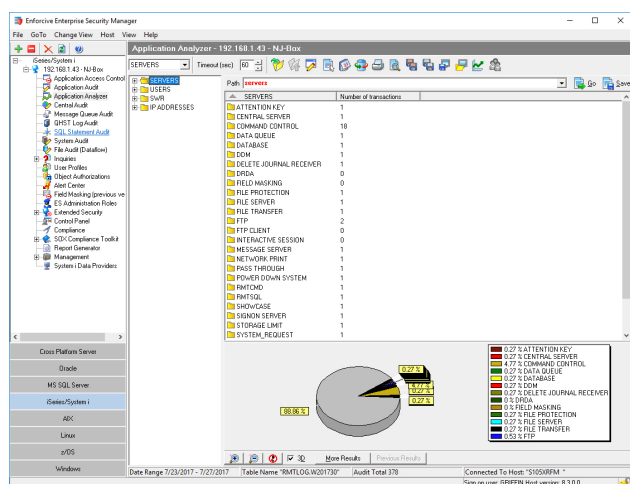


Figure 1: Enforcive Enterprise Security GUI

## Included Modules Within Enterprise Security Suite

- Alert Center
- Application Access Control
- Application Analyzer
- Application Audit
- Central Audit
- Control Panel
- ES Administration roles
- File Audit
- Inactive users
- Inquiries
- Management
- Message Queue Audit
- Object Authorizations
- QHST Log Audit
- Report Generator
- Session Timeout
- SOX Compliance Toolkit
- SQL Statement Audit
- System Audit
- User Profiles

## Add-On Modules

- Compliance Accelerator Package
- Data Provider
- Field Encryption
- Firewall Manager
- Password Self Service
- Policy Compliance Manager

## Enterprise Security Suite: Included Modules

### Alert Center

Creates instant notifications of transactions, data events, and compliance deviations.

### Application Access Control

Comprehensive exit point control, including ODBC, JDBC, FTP, IFS, etc.

### Application Analyzer

Graphical viewpoint of application access activity to the IBM i.

### Application Audit

Detailed log of network and native exit point activity with powerful filtering tools.

### Central Audit

Combined archive and audit facility containing logged events of many kinds of activity.

### Control Panel

Allows you to define parameters and default values in Enterprise Security Suite.

### ES Administration roles

Offloads help desk tasks while maintaining security and compliance requirements.

### File Audit

Field level auditing of files provides comprehensive views of changes to data.

### Inquiries

Pre-defined reports of security definitions, authorities, etc., based on best practices.

### Management

Helps group systems to significantly reduce reporting overload.

### Message Queue Audit

Analyze and report on the behavior of users, applications, and group messages.

### Object Authorizations

GUI-based control of native object authority.

### QHST Log Audit

Saves events from IBM i QHST files and makes them available for subsequent audits.

### Report Generator

Provides a complete solution for defining, optimizing, distributing, and archiving reports.

### Session Timeout

Capability to set session time-outs and policies for inactive users.

### SOX Compliance Toolkit

Set of pre-defined alerts and reports tailored to SOX compliance auditing needs.

### SQL Statement Audit

Allows you to monitor and audit internal SQL events on the system.

### System Audit

Log for the system journal to manage logging policies, view events, and create reports.

### User Profiles

Efficient and effective portal for IBM i user management.



## Enterprise Security Suite: Add-On Modules

### Password Self Service

Enforcive's Password Self-Service (PSS) streamlines password management into an autonomous process that enables end-users of IBM i and Windows to securely manage their passwords independently.

### Firewall Manager

A dedicated software-based firewall for the IBM i that simplifies the implementation of port based access policies.

### Field-Level Encryption

Field Encryption is comprehensive platform for file- and field-level encryption as well as masking and scrambling.

### Data Provider

Security officers can easily configure Enforcive Enterprise Security to export events in syslog format to third party log management and SIEM products.

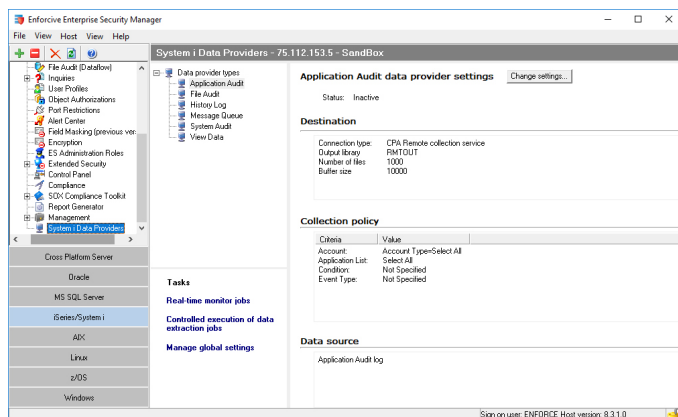


Figure 2: Data Provider GUI

### Policy Compliance Manager

Template-based control of native definitions, deviation reporting, and remediation.

### Compliance Accelerator Packages

Extensive sets of predefined reports, alerts, and compliance definitions mapped to specific regulatory standards such as SOX, PCI DSS, ISO, and COBIT.

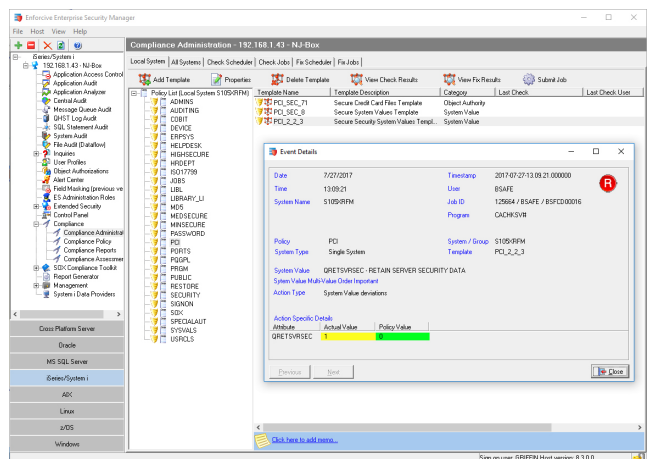


Figure 3: Policy Compliance Manager Deviations