

Mainframe Modernization with Precisely Data Integration

Modernize your IT infrastructure by moving off costly, legacy platforms while making your data accessible to areas of your business

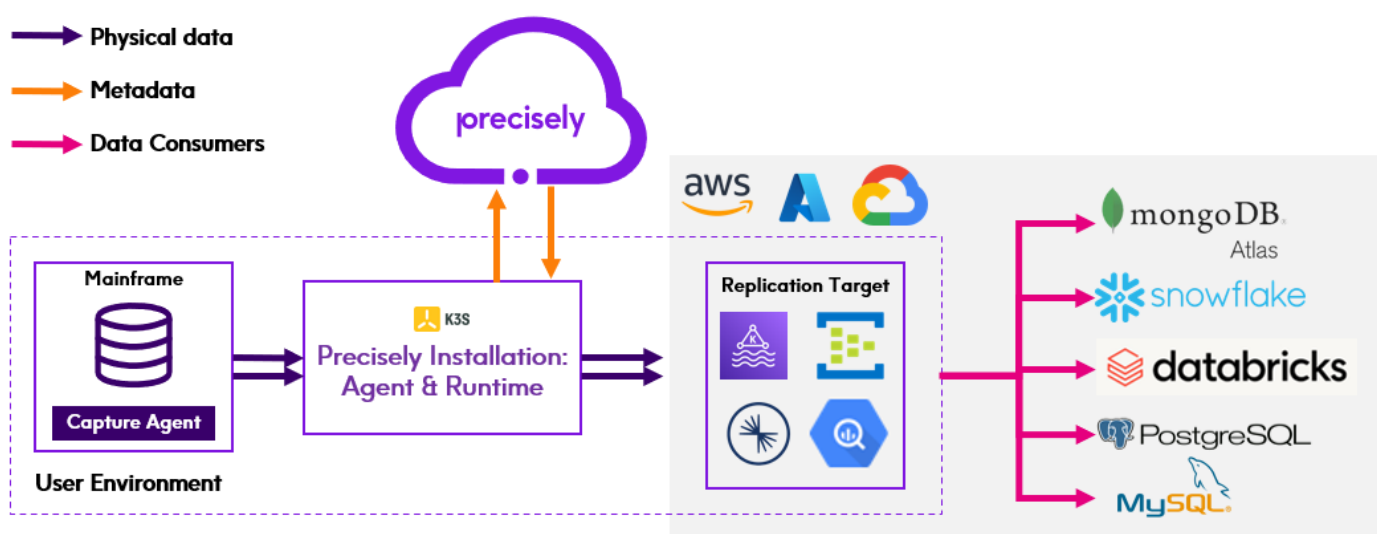
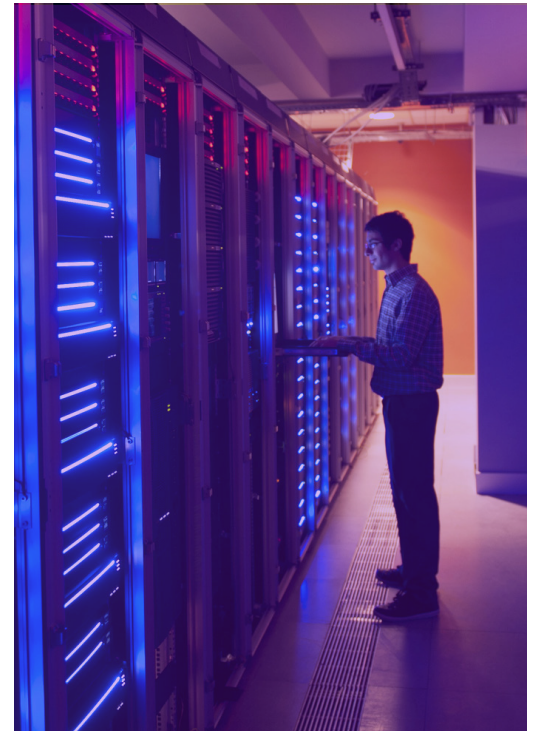
Overview

Precisely equips you with the integration tools and expertise to successfully migrate and modernize your core transactional systems at scale while developing new customer channels and applications.

Our 50+ years of data integration expertise is enhanced by our strong partnerships with other market leaders, including AWS, Confluent, Databricks, and Snowflake. Meaning that you can fuel the existing modern data platforms in your environment with complex, enterprise data, bringing new innovations to market faster while creating a better experience for both your internal and external customers.

Benefits

- Faster time to market for new applications and data products
- Minimize downtime and prevent potential issues from existing workflows
- Democratize your data and make it accessible to more areas of the business
- Modernize on your terms, without the need to retire your transactional systems
- Enable seamless adoption of new requirements without having to rebuild core logic or incur redevelopment, testing and deployment costs



Replicate data to all public clouds, ensuring seamless integration of mainframe data into applications

Capability Highlights

- **Complex Source Integration:**
Integrate hierarchical data formats (e.g. VSAM, IMS, COBOL Copybooks, mainframe fixed and sequential files, and Db2/z) without specialized skills
- **Secure, flexible deployment options:**
Design data pipelines when and where they need them - both on-premises and in the cloud without restriction
- **Deploy locally, replicate globally:**
Perform cloud repatriation at scale without having to rebuild existing pipelines
- **Embedded governance and lineage:**
Automatically catalog and harvest metadata and customer COBOL copybooks while making business and technical metadata searchable
- **Cloud-to-mainframe replication:**
Share changes in data on cloud platforms and applications back to the mainframe – ensuring that data is consistent across IT platforms
- **Accelerate your deployment and offload operations:**
Partner with Precisely experts to accelerate and manage your deployment

Real-world Use Cases



BMW: Enhanced performance efficiency by moving mainframe applications to Microsoft Azure and enabled faster delivery of new product and services to the market



Citizens Bank: Delivered an enhanced 'Digital Bank' experience by providing a consistent and accurate data to customers across channels; and reduced mainframe MIPS usage by 80% and operating costs by 6%.



Sun Life Financial: Saved \$1.8 M in costs annually, lowered MIPS, eliminated existing batch ETL workflows, launched a Customer 360 project with Salesforce and built a foundation for future innovation.

Mobile Application

[← Continuous Replication](#) > [Continuous Replication Pipeline](#)

Engine process	Replication	Capture	Log reader	Backlog rows	Longest total latency	Agent
OK	! Action required	⚠️ Attention	OK	1234	5434.423s	Agent Connec-Agent

▶ □ ⋮
 Search
 + Create Pipeline

Health	Replication Pipeline	Engine Process	Replication	Capture	Log Reader	Backlog Rows	Total Latency	Type
 !	Products ⋮	OK	! Action required	⚠️ Attention	OK	1,234	10.111s	Copy then Replicate (Copying)
 !	Customer Info Update ⋮	OK	! Action required	⚠️ Attention	-	963	600.342s	Replicate
 !	Support Cases ⋮	OK	! Action required	OK	OK	122,816	5434.423s	Replicate
 ●	Backup.db ⋮	OK	● Stopped	OK	-	96	212.221s	Copy then Replicate (Replicati...
 ⚠️	Test Copy Pipeline ⋮	OK	OK	⚠️ Attention	-	76	30.321s	Copy then Replicate (Copy)
 ■	Test Connections Update ⋮	-	-	-	-	-	-	Copy then Replicate
 -	Test Draft ⋮	-	-	-	-	-	-	Copy then Replicate
 ■	Suppliers Deleted ⋮	● Stopped	● Stopped	● Stopped	● Stopped	0	0	Replicate

Last refreshed: 10 Sep 2024 12:12pm

Monitor integration pipelines in the Data Integrity Suite

Partners

By partnering with industry leaders Precisely fits into your existing environment so you can leverage mainframe and i Series data to enhance business operations and drive actionable insights.

