

# MapInfo Pro Subscription

Get instant access to maintenance and updates

## The powerful, easy-to-use GIS you trust is now available as a subscription

You've come to rely on MapInfo Pro to manage, analyze, visualize, and present location intelligence. Now, get all the capabilities you've come to expect from MapInfo Pro in an easy-to-buy, easy-to-manage subscription. One- and three-year subscriptions offer maintenance, automatic notification of updates and upgrades, and contains features formerly only available in MapInfo Pro Advanced.

Best of all, [a one-year subscription to MapInfo Pro costs less than our previous licenses.](#)

## Create, view, and analyze huge raster grids

A MapInfo Pro subscription includes access to our patented Multi-Resolution Raster (MRR) data format. Particularly valuable to analysts working in the agriculture, oil and gas, and telecom industries, MRR is a high-performance solution for storing and processing extremely large raster datasets.

Additional features include:

### Enhanced data visualization – across space and time

- Want to chart 10-year population trends in a proposed development area? See how shopping patterns change with the weather? MapInfo Pro's new Time Series tool enables you to easily plot data changes over time. (See Figure 1.)
- Access and use online data sources, including Bing Maps and other satellite imagery. Then overlay these images onto your maps, highlighting roads and major landmarks for easy identification.
- Easily manage large Web Feature Service (WFS) data requests with new support for WFS paging.

### Accessible data – whatever the format

- Save time by accessing the data you need directly from the MapInfo Pro interface. MapInfo Pro supports a broad variety of file formats, including ESRI Shapefile, GeoJSON, KML, and text-based formats such as CSV.

## MapInfo Pro Subscription at a glance

- Get the cutting-edge GIS capabilities you need in a cost-effective subscription.
- Visualize how data changes across space and time.
- Ingest new file formats, including our patented Multi-Resolution Raster data format.
- Enjoy expanded support for web-based location services, including Bing Maps.
- Get faster time to insight with enhanced data-select and design tools.

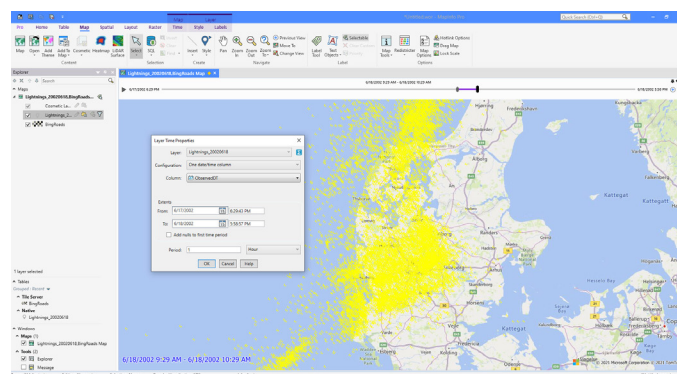


Figure 1: MapInfo Pro helps you plot data changes over time, as illustrated in this screen grab of lightning strikes.

## Faster time to insight with enhanced data-select and design tools

- Simplify layout design with quick access to dynamic text-labeling tools.
- Slice and dice data for specific records with our new Select by Attribute tool. (See Figure 2.)
- Improve map design with new capabilities that add dynamic text to your map title, scale, time range, and more.

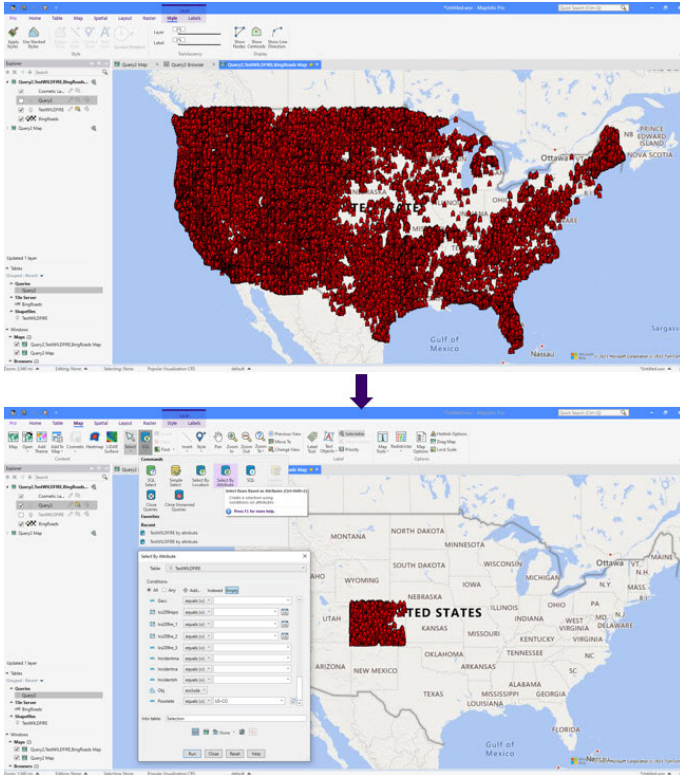


Figure 2: Narrow your search and deepen your understanding with a Select by Attribute query.

## Up-to-date geocoding with Precisely API services

- Get our best-in-class geocoding and routing services, updated monthly.
- Explore the improved usability of our account-management service page.

## Expert support

- Talk live to our technical support staff. Get trusted advice on implementation, optimization, troubleshooting and issue resolution.
- Use our online case-management system for logging and tracking issues requiring support.
- Use the Precisely online knowledge base for product documentation and other resources.
- Access the [MapInfo Pro Community](#) to get inspired, learn from your peers and Precisely employees, guide the future of MapInfo Pro, and discover time-saving tips and tricks.

## What is MapInfo Pro?

MapInfo Pro is an easy-to-use geographic information system that helps you more easily manage, analyze, visualize, and publish location intelligence. With more than 100,000 users and support for 17 languages, it is one of the most popular GIS software systems in the world.

“I first started using MapInfo in 1999 and have used pretty much every version since. The latest version is the best one yet. One of the most notable improvements from a long list is Python language support.”

— Andrew Niebling, Senior Property GIS Analyst, Queensland Rail

## Get started today

Unlock the power of insightful, easy-to-use GIS. [Download MapInfo Pro today.](#)